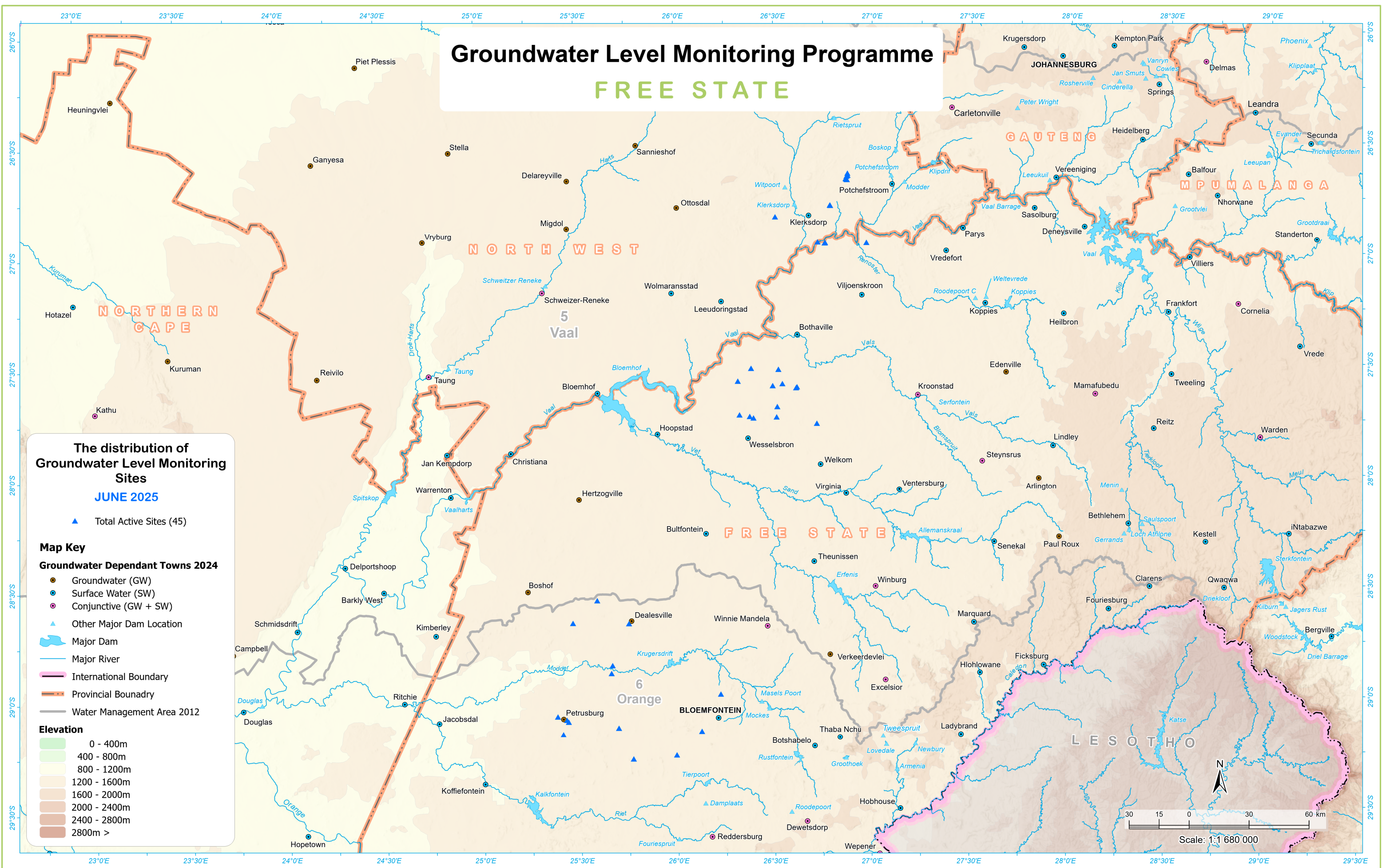


Groundwater Level Monitoring Programme

FREE STATE



The distribution of Groundwater Level Monitoring Sites
JUNE 2025

- ▲ Total Active Sites (45)

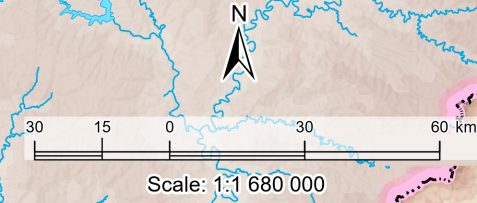
Map Key

Groundwater Dependant Towns 2024

- Groundwater (GW)
- Surface Water (SW)
- Conjunctive (GW + SW)
- ▲ Other Major Dam Location
- Major Dam
- Major River
- International Boundary
- Provincial Boundary
- Water Management Area 2012

Elevation

- 0 - 400m
- 400 - 800m
- 800 - 1200m
- 1200 - 1600m
- 1600 - 2000m
- 2000 - 2400m
- 2400 - 2800m
- 2800m >



Data sources:
 Towns, Rivers, Dams, Elevation and International Boundaries - Department of Agriculture, Land Reform and Rural Development (DALRRD), Chief Directorate: National Geospatial Information (NGI); National Groundwater Archive (NGA) & Water Management Areas - Department of Water & Sanitation, Directorate: National Hydrological Services; Water Management System (WMS) - Department of Water & Sanitation, Directorate: Recourse Quality Information Services (RQIS).

Map produced by:
 Department of Water & Sanitation: Directorate: Spatial Information (SI);
 Sub-Directorate: Geographic Information and Archiving (GI&A) - Cartographic Services Unit.
 Map Date: Jun 2025 (Ref: GM25_273)